



sanako



Sanako Study 1200

Is it possible to increase the time students spend speaking the language in a classroom? How do you engage multiple students at the same time in activities that would usually take a lot of time to organise and administer? Aren't students easily distracted when working with computers?

With **Sanako Study 1200**, class sizes, limited time and distractions are no longer a problem. As easily as you would teach a single student, you can enable the entire class to participate in meaningful activities whilst utilising the allocated time efficiently and remaining in complete control.

Engaged learners, Improved results!

Learning a language requires learners to practise and use the language as much as possible to develop their skills and gain a holistic understanding. A language lab engages students to actively participate in language learning exercises and encourages them to practise more than is currently possible in a traditional classroom environment.

BEST TOOLS FOR THE JOB

At Sanako we pride ourselves on having over 50 years of experience in delivering the tools for learning a new language. Sanako Study 1200 is our flagship, designed to make teaching with ICT both enjoyable and effective.



CREATING MEANINGFUL LESSONS IS ONLY A FEW CLICKS AWAY

With **Sanako Study 1200**, all the most frequently used language learning activities are at your disposal with predefined workflows. We have designed the Study Tutor interface with teachers to make sure you will not spend most of your time learning to use the software. **Preset activities in Study 1200 include:**

- Listening Comprehension
- Model Imitation
- Reading Practice
- Round table discussion
- Discussion
- Exam mode
- Tutoring
- Web Browsing
- Vocabulary test



Sanako Study student interface

TEACHING WITHOUT DISTRACTIONS

With the internet providing ample distractions, it is hard to keep students focused on the task at hand. Sanako Study provides you with a suite of functions designed to keep you in control: Internet disabling, locking student keyboard and mouse, monitoring, controlled web-browsing, examination mode, thumbnail views of student workstations etc. You can even launch only the necessary programs to ensure students are focused on the correct task.

REINFORCE LEARNING

Use tools that are familiar to students, such as text messaging or chat, to communicate with them in an engaging way and reinforce learning by creating more opportunities to interact in the target language. Collaborative resources such as an

interactive whiteboard and marker tool ensure that students get actively involved in learning.

INDIVIDUALISATION

Using digital technology to provide students with individualised teaching will improve learning results and motivation. All combinations are available to you with the possibility to divide students into groups, pairs or assign a playlist to the entire class with different tasks for all students.

FLEXIBILITY

You can customize teaching to better suit your students by using all the materials and methods at your disposal conveniently through the same user-friendly interface without limiting your choices. Sanako Study even supports multiple teachers randomly located.

STUDENT PLAYER

Using a simple method of dual track recording and allowing students to insert their recordings into a master track/file along with recapping, inserting their own voice and comparing the results in audio graph mode gives the students the tools they need to reinforce learning and stay motivated with visual and auditory feedback.

GO BEYOND THE CLASSROOM

Sanako Study 1200 comes bundled with Study Lite recorder, which allows students to practise outside the classroom, at their own pace. You can easily assign additional material for extracurricular studying.

"We have found the Sanako Study 1200 language centre an essential boost to our student's speaking and listening skills, enabling them to develop these in a more varied and autonomous way."

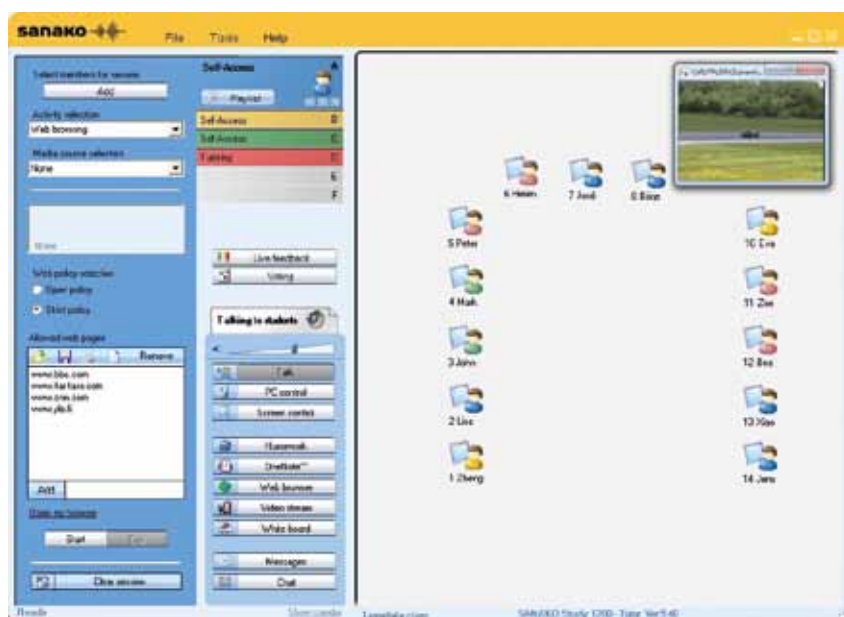
Rachel Hawkes, Assistant Principal,
Comberton Village College, UK

Modules

Study 1200 software can be enhanced with plug-in modules that introduce new teaching and learning activities.

Sanako Study modules:

- Sanako Study Video Live Module
- Sanako Study Examination Module



Sanako Study 1200 teacher interface

Free content included

5 free English lessons come bundled with your Study 1200 installation. These exercises integrate to Sanako Study 1200 environment and can be used to demonstrate all capabilities of Sanako content format. Check the Sanako website for information on additional content packages.

Ripping tool

Study 1200 can convert your existing audio materials into more convenient MP3, WAV, WMA or MFF format. You can convert audio from CDs, the Internet or auxiliary sources.

Your key to a whole school teaching solution

The Sanako Study group of teaching solutions provides a reliable, user-friendly and expandable foundation for the use of IT, multimedia, the Internet and various collaboration tools in the teaching of languages and other subjects. With simple interfaces, **optimized wireless performance** and activity-led functions, all of our teaching software can easily be used by all teachers; they're also suitable for teaching students at all levels. Study software teaching solutions can be enhanced with the addition of plug-in modules that introduce focused learning or teaching activities. All software solutions in this group are compatible with the latest Microsoft® operating systems.

We reserve the right to make modifications to any products described herein.

About Sanako Corporation

Sanako is the global leader in developing tutor led language teaching software and language labs for the educational sector. We have worked closely with our customers for over 50 years towards a single goal: to enable better comprehension, speaking and communication skills for language learners. Satisfied customers in over 100 countries and over 30,000 classroom installations worldwide are proof of our dedication to delivering customer value. Sanako is a Microsoft® Certified Partner, a WorldDidac Quality Charter Member and a corporate member of the International Society for Technology in Education (ISTE®).

Sanako Corporation is a global organisation employing professionals on four continents. Sanako's headquarters is located in Finland. Our network of over 200 partners worldwide ensures we are always close to our customers.

5 FREE LESSONS INCLUDED

WITH STUDY 1200:

- AIRPORTS
- EDUCATION
- COMPUTERS
- ANIMALS
- PHONICS



Welcome to **The LanguagePoint**,
a brand new online teacher
community sponsored by **Sanako**.

www.thelanguagepoint.com

1865910-12164

sanako

Sanako Corporation Headquarters

Eurocity
Joukahaisenkatu 1
FI-20520 Turku
Finland

T: +358 20 7939 500
F: +358 2 2363 440
info@sanako.com

www.sanako.com
www.thelanguagepoint.com





LANGUAGE LEARNING AT ITS BEST

SANAKO Study 1200 is an advanced language learning suite that offers an extended range of essential activities that focus on both listening comprehension and voice practice. Study 1200 provides the students and teachers with all the features for and benefits of a modern language learning environment. The versatile solution supports student voice recording for drilling in pronunciation and intonation, and offers teachers innovative content authoring capabilities, which allow for the creation of new learning material.

EXTENSIVE SET OF LANGUAGE LEARNING ACTIVITIES

Listening Comprehension

In this activity, the teacher can transfer an audio track to students. During the playback of the source material or afterwards, the teacher may select one or several students to answer questions. The teacher may also allow students to access their digital recorders, so that they can work with the source material individually and at their own pace.

Discussion Activities

The teacher can unobtrusively listen to student conversations, allowing them to feel free to express themselves using their own words, rather than rehearsed textbook responses.

SANAKO STUDY 1200 Lan

Round table discussion

This activity allows teachers to set up small student groups with a designated chairman, who leads the discussion. Teachers can set up a meeting environment to help advanced language learners strengthen their oral presentation skills.

Reading Practice

Reading aloud is a useful way of practicing intonation, rhythm and pronunciation, and is ideal for students' individual practice. Students read a text which is recorded on the student track, and then practice to improve their proficiency.

Model Imitation

Students listen to and repeat a model track that the teacher has transferred to them to practice the stress, rhythm and intonation of a foreign language, while their voices are recorded. The model audio track for the session may be recorded by a teacher or a student.

AP Exam

Sanako Study 1200 allows the teacher to administer AP® oral exams.

AP Exam activity is specially designed to set up, test and collect student AP® responses.

AP is a registered trademark of the College Entrance Examination Board. AP exams are widely used in the United States.

STUDY 1200 STUDENT APPLICATION

Join sessions and communicate

Student applications allow students to join teacher led learning activities and use communication tools like text based messages, chat and teacher call.

SANAKO Study 1200 Digital Recorder

The built-in digital recorder in Study student application allows the to use a wide range of compatible media file formats for language. Students can play, stop, rewind, fast forward and pause a file and their voices. They can also set and remove bookmarks that can be locate places in the file for review and additional practice.

Voice Graph

A graph can be viewed simultaneously from the program and student tracks. This visual representation of the voice track allows students to compare their recorded output to the original or model track for detailed speech analysis.

Recap Functionality

The Recap function is designed to quickly repeat the previous sentence or part of the file. It permits students to review examples of authentic or native speakers in the target language.

Voice Insert

In the Voice Insert mode, gaps can be inserted automatically into source material, while students are recording their voices. This unique feature allows for the creation of exercises during playback.

Subtitling

This feature represents a significant usability improvement for students using the Study 1200 media player. With the ability to subtitle files, students will gain additional valuable language practice working with media files.

ADVANCED TOOLS FOR BETTER RESULTS Sessions

Study 1200 has up to six sessions for conducting learning activities.

The teacher can initiate different activities for the students and use different methods for each session. In the Self-Access mode each student works independently of all the other students.

Playlists

Teacher-specific file areas allow teachers to provide students with playlists for independent access and study. Because file areas are teacher-specific, all teachers can upload content to meet their individual teaching requirements. Session-specific playlists help teachers differentiate teaching by providing files that address students' varying skill levels.

Communication

With Study 1200, the teacher can talk to the entire class or to a group of students. The teacher can also listen to and discuss with a selected student and participate in a student's activity.

Monitoring Students

Monitoring students allows teachers to listen to selected students' work and view their screens. Screen monitoring allows the teacher to view the screen activity of multiple student workstations in real time, automatically and consecutively.

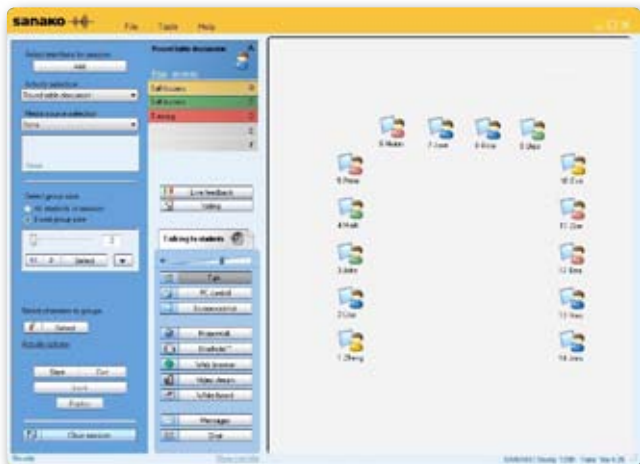
Instructions

Students benefit from additional support, as teachers are able to include text instructions in media files distributed to students for independent or classroom practice. No longer will students get away with the age-old excuse, "I didn't understand the assignment"!

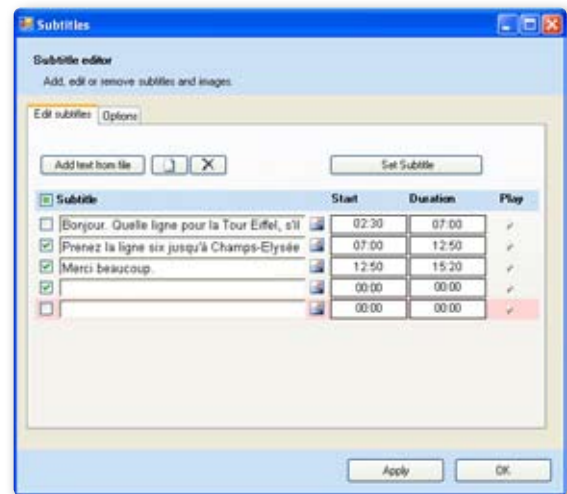
Screen Transfer with Audio and Marker Tool

Study 1200 allows the teacher to share the contents of the teacher screen and talk to the students at the same time. The screen image and audio can be transferred to a single student or the entire class. The Marker Tool allows teachers to highlight screen items in order to make sure that students are concentrating on essentials.

Language Learning Software



Screen view showing round table discussion activity in the SANAKO Study 1200 teacher interface.



View of subtitling in SANAKO Study 1200.

Whiteboard

Teacher and students can collaborate using an interactive whiteboard. Pictures, text and graphical annotations can be drawn to the whiteboard by anyone who is participating in whiteboard session. Whiteboard content can be saved as a project which can then be edited afterwards.

Written Assistance

The teacher can send messages to assist students with their work and the students can reply. The teacher can also initiate a text chat session with single or multiple students. The chat feature provides an additional layer to audio-based classroom collaboration.

Remote Access

The teacher can collaborate with selected students by accessing their computers to help with a task on the student screen and at the same time communicate with the student.

Control of Student PCs

Study 1200 gives the teacher control over student PCs, which allows for guidance and support of the students. The teacher can black out the student screens and/or lock the cursors and keyboards to draw their attention to a given task. The student PCs can also be shut down, restarted, logged off or switched on (Wake-On-LAN) individually or all at the same time. A blocking feature allows the teacher to block the use of Internet or other applications to help students focus on a given task.

Voting and Live feedback

The Voting feature allows teachers to run on-the-spot queries to determine student engagement or understanding of a subject. Students can use the feedback tool to let teachers know if they are following the lesson or if they are having difficulty.

Adjustable thumbnails in separate windows

Teachers can work with separate windows, making it easier to more effectively monitor student activity in the Study environment. Using a dual display system makes it easy to monitor, guide and support students while working with other applications on a separate display. The enhancement also allows teachers to adjust the size of student thumbnails for more focused monitoring of class activity.



SANAKO Study 1200 Datasheet

SANAKO Study Lite Recorder

Schools using Study 1200 can allow their language students to conduct independent on- and off-campus studies using SANAKO Study Lite Recorder.

The SANAKO Study Lite Recorder is an application intended for students' independent language studies. It is a two-track recorder with specialized language learning features similar to those in the Study 1200 Student recorder.

Support for Windows 7

Version 5.00 of the Study platform guarantees compatibility with the latest Microsoft operating system, Windows 7, delivering on the software promise of compatibility with the most modern operating systems.

Minimum Requirements

As per the requirements for the supported operating system:
The Microsoft® Windows® XP, Vista or 7

- Microsoft® Windows® XP or Windows Vista operating system
- Microsoft .NET Framework® 2.0 SP2 or later
- DirectX 9.0c or higher
- 1 GHz processor
- 512 MB of system memory, 2 GB recommended for Tutor PC
- 100 MB of free disk space for installation *
- 1024*768 display resolution with 16-bit colors
- AC97 or HDA compatible sound card
- Network Adapter, TCP/IP support required
- PC Headset – recommended SANAKO models to ensure high quality audio
- QuickTime® 7.0.3 or later is required for displaying certain file types and for the SANAKO Study Video Live Module



Network Requirements

Multicast transmission has to be enabled in the network.

NOTICE: WLAN has some limitations for multicasting,
please contact SANAKO support for advice.

*) The amount of free disk space required during the use of Study 1200 varies primarily according to the use of the recording functionality - longer recording times require more disk space.
Note: In order to use the OneNote feature, Microsoft OneNote must be installed on the student computers before installing Study Student. Otherwise Study will be unable to connect to OneNote and tutor notes cannot be sent to students' OneNote applications.

Note: Actual requirements may vary based on your system configuration. It is essential to make sure that the operating system runs smoothly on each computer where a StudyTutor or Student application will be installed.

QuickTime is a registered trademark of Apple computer Inc.

Microsoft, Windows, Windows Vista and the Windows Start button are registered trademarks of Microsoft Corporation in the United States and/or other countries.

SANAKO Software Maintenance

SANAKO Software Maintenance allows Sanako software users to receive up-dates that are available during the coverage period without paying an update charge. Software maintenance is available for Study 1200 for one-year periods.

Advanced Technology from Finland



SANAKO Study Examination Module

Enhance Teaching Investments with more Functionality
– Plug and Play for Tests!

This SANAKO Study Module answers a growing demand for more intensive and accurate assessment of student progress. SANAKO Study Examination Module is a valuable tool for teachers, as spot examinations are an important component in continuous student evaluation. Using the module couldn't be easier: a 6-step "wizard" application simplifies the creation of tests, and is flexible enough to allow teachers to vary the type of questions used in tests.





The SANAKO Study Exam Player displaying questions created with the SANAKO Study Exam Wizard.

Easy test creation

The Exam Wizard can be launched from the Study teaching software, conveniently expanding the range of teaching activities that can be launched from the same interface.

More opportunities for testing and evaluation

Design any type of question to test a particular skill or student ability, using the helpful prompts and instructions in the Study Exam Wizard - use multiple choice, free response and more. Teachers may even set the time and outline instructions for tests before administering them, as well as preview entire exams. Once the teacher is satisfied with the design, launching the exam for students is only a click away!

SANAKO Exam Player

Students can easily and conveniently answer tests using the SANAKO Exam player. Teachers use the regular activity selection procedure in the Study 500 / 700 / 1200 Tutor interface to launch exam files for students. Once the teacher initiates the Examination activity in the Study tutor interface, exam files are played automatically for students on the SANAKO Exam Player, minimizing the time spent in getting tests started.

Students may also use the Exam player in stand-alone mode for additional exam practice or review, creating more opportunities for independent study with test material.

Immediate feedback for students

The Examination Module provides important follow-up by generating test results for both student and teacher, allowing students to receive immediate feedback on their performance. The teacher may choose not to show students their results immediately. Teachers can also save exams for future use.

Advanced Technology from Finland

Localization

Study Examination Module provides full localization support for the Study Exam Wizard, Exam Player and Exam templates. Localization support makes it easier for teachers in different regions to adapt a variety of tests for local use.

Support for new exhibition formats

Teachers can now be more creative in designing tests. A variety of media resources - including audio, video, images and text files - can be attached to separate questions in the exam to develop more challenging tests.

Exam navigation options

Teachers can choose to allow students to engage in free or limited navigation during exam playback. Limited navigation allows students to use only forward navigation while free navigation allows students unlimited access through the test.

Adjustable grading scale

The ability to localize grading scales when assessing student performance makes it easier for teachers to match student outcomes to regional or local norms.

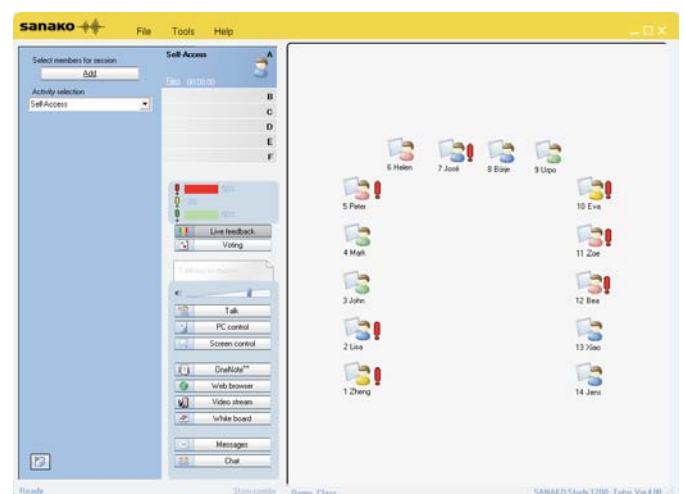
Question weighting

This feature allows the teacher to place the desired level of emphasis on different questions in the exam. It can be used to highlight the importance of specific subjects or subject areas in the examination.



ON-THE-SPOT INFORMATION ON STUDENT ENGAGEMENT

SANAKO Study Voting Module is available for users of SANAKO Study 500, Study 700 and Study 1200. When activated by a user license, it allows teachers to run on-the-spot queries to determine student engagement or understanding of a subject. The activated module allows students to use the tool to let teachers know if they are following the lesson or if they are having difficulty.



Students can use the feedback feature to show teachers whether they are following the lesson or need help understanding the subject.



Teachers can quickly and easily create questions and response choices to test students.



SANAKO StudyVoting Module allows teachers to see at a glance how many students have understood the lesson by instantly displaying the voting results.

Spot check student comprehension

This unique module provides teachers with a quick snapshot of student understanding of a given subject, allowing them to immediately correct mistakes and misconceptions. It helps support effective instruction and ultimately improves learning outcomes.

Correct misunderstandings

Teachers using the module can launch a question to students. The teacher can then immediately correct any misunderstandings on the subject matter based on student responses, ensuring more effective learning.

SANAKO StudyVoting Module allows teachers to pose multiple choice questions to instantly test student engagement in the lesson.

Sanako Study Voting Module can be used to help students provide valuable feedback for teachers during class time. Students can indicate whether or not they are following the lesson, and if they need assistance. This allows them to influence the pace of teaching and ensures that no learner is left behind during the lesson.

More effective instruction and guidance

The Voting Module provides teachers and students with a structured approach to testing student understanding and engaging student feedback. When both teachers and learners have access to the Module's easy-to-use tools at their fingertips, learning can be more interactive. Moreover the Module allows teachers to immediately address problems and concerns with the subject matter, thus ensuring that students learn more effectively.

Minimum System Requirements

SANAKO Study Voting Module system requirements are the same as for the SANAKO Study product family.

High Technology from Finland



SANAKO Corporation

P.O. Box 41, FI-20741 Turku, Finland
Phone +358 2 2166 500 • Fax +358 2 2166 527
info@sanako.com, <http://www.sanako.com>
SANAKO User Club and Discussion Forum:
<http://members.sanako.com>



SANAKO Study Video Live Module

– Plug in and Play Video!



SANAKO plug-in modules enhance teaching and learning effectiveness in the SANAKO Study software line. The SANAKO Study Video Live Module has been designed as an extension package for the Sanako Study teaching systems. Sanako Study Video Live Module assists teachers in streaming video from a variety of analog sources directly to students. The easy-to-install module consists of a Sanako video streaming hardware server with Sanako software, and a simple browser interface for effortless administration.



Includes video samples by BBC Active!

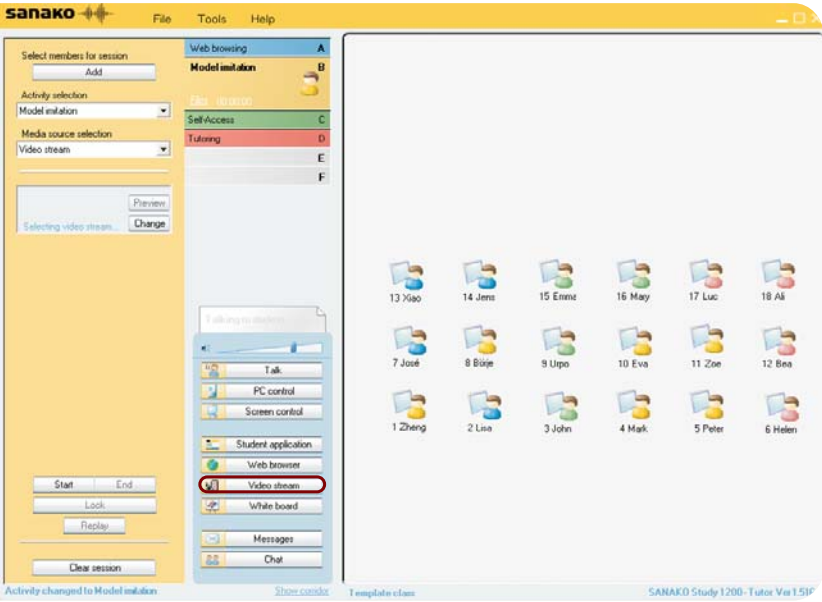
BBC ACTIVE

sanako

Video Streaming made easy

The SANAKO Study Video Live Module is ready to be used once the video streamer is installed on the LAN, and one or more audio/video sources are connected to the video streamer. A selector switch may be installed if more than one analog source is needed.

The teacher can launch a video stream to student screens by clicking on the Video Stream button in the SANAKO Study interface or by selecting it as a media source in language learning activities (only in SANAKO Study 1200). Teachers using SANAKO Lab 300 can select the Video Streamer from the Program Source list. The module allows the teacher to stream video only, or to simultaneously stream, digitize, and save the file for future use. Video content launched in this way is then streamed to students through network and can be seen on the student study player on the PC monitor.



Affordable video for learning

This affordable and flexible module features a PC-based server that allows teachers to stream video content directly to an entire IT classroom through the network, eliminating the need for extra cabling to student computers.

From analog sources to digital video library

Video may be streamed to students from a variety of analog sources, including DVD or VHS players, satellite receivers - even a video camera, offering teachers a number of options to enhance their teaching with video material. Content streamed from analog sources can be saved to the server once it has been played, making it faster and easier to launch the next time it is needed.

Many possibilities for use

The video streamer features an intuitive, user-friendly interface which is easy for teachers to master. Content streamed from the server can be viewed with the SANAKO Study Player, SANAKO Media Assistant and QuickTime® player.

Enhancing your Study environment

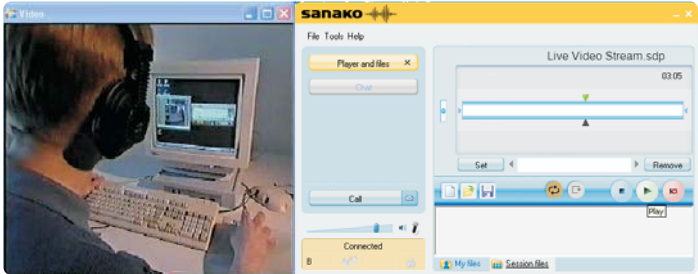
The controls for the video streamer can be launched from the Study software, enhancing the functionality of the existing Study system, by adding another program source.

SANAKO Study Video Live Module features

- PC-based server combined with SANAKO software
- Video Streamer controls integrated into the Study software and Lab 300 software
- Optional Video Streamer control and administration via a web browser
- Stream from analog sources: DVD, VHS, video camera, satellite receiver, etc.
- Connect analog sources to the server with regular video cabling (S-video or composite) and audio cabling (2x RCA)
- View with the SANAKO Study Player, SANAKO Media Assistant and the QuickTime® player.
- Save space on the server and reduce demand on network bandwidth with MPEG compression technology

Minimum requirements

- Microsoft®Windows® 2000 or XP
- 1.5 GHz processor
- 512 MB memory
- QuickTime® 7.0 or later
- 100 Mbps Local Area Network
- Network switch or hub must support multicast transfer



Microsoft, Windows and Windows are registered trademarks of Microsoft Corporation in the United States and/or other countries. QuickTime is a registered trademark of Apple Computer Inc.



SANAKO Corporation

P.O. Box 41, FI-20741 Turku, Finland • Phone +358 2 2166 500 • Fax +358 2 2166 527 • info@sanako.com, http://www.sanako.com
SANAKO User Club and Discussion Forum: http://members.sanako.com



SANAKO Headset SLH-07 Datasheet

HIGH-PRECISION SOUND QUALITY FOR OPTIMAL AUDIO PERFORMANCE

The new professional SANAKO Headset SLH-07 offers excellent sound quality for optimal audio performance. It is specially designed to offer maximum effectiveness in communication. It has superior sound quality, eliminates exterior noise and allows students to distinguish audio differences in articulation, pitch and intonation, thus enhancing its utility in a number of listening-based activities such as language practice.

The Best Possible Sound Quality

The high-precision sound quality of this professional grade headset ensures the best possible audio transmission, and the adjustable boom allows the microphone to be accurately positioned for outstanding speech reproduction.

Perfect Comfort

The SANAKO Headset has soft replaceable ear cushions and a padded and adjustable headband to ensure comfort even during extended wearing time. The lightweight adjustable headband promises a perfect fit for everyone.

Durability and Ease of Replacement

Additionally, the durable rugged construction makes this stereophonic headset reliable in all situations and guarantees a long lifetime. The removable cable on the SANAKO Headset allows for easy storage and on-site replacement!

Applications of the Professional Grade SANAKO Headset

- Language Learning Systems
- Multimedia Learning Systems
- Computer Training
- Audio and Video Editing
- Intercom / PA
- Broadcasting
- Security Systems



SANAKO Headset for maximum effectiveness in communication

Model: SLH-07

Earphones

- Frequency response: 20 - 20,000 Hz
- Impedance: 100 ohm
- Sensitivity (SPL/ 1kHz): 105 +/- 3 dB
- Rated power: 100 mW
- Audio handling: Stereo/Mono
- Earpads: Soft, insulating, 45 mm opening

Model: SLH-07

Microphone

- Type: Electret condenser
- Directivity: Unidirectional
- Frequency response: 40 - 16k Hz
- Impedance: 2,2 Kohm
- Sensivity: (1V/Pa - 1kHz): -36 +/- -3dB

Other

- Weight: 265 gm without cable

The following SLH-07 headset and cable items are available for order:

- SLH-07 headset, without cable (product code: 1395025)
- Modular cable, 1,5m, modular plug (product code: 1325030)
- Modular cable, 3m (Master), modular plug (product code: 1325040)
- PC cable, 1,7m, 2x3,5mm plugs (product code: 1325020)
- PC cable, 3m (Master), 2x3,5mm plugs (product code: 1325050)
- USB cable, 1,7m, USB plug (product code: 1325070)

Sanako Study 1200 v. 6.00 Bid Specs

General

1. A COMPLETE MULTIMEDIA LANGUAGE LEARNING ENVIRONMENT

- 1.1. Sanako Study 1200 is an advanced software-only language learning environment. It combines the use of multimedia and the internet with a suite of essential classroom management tools and varied media sources to help teachers deliver effective and motivating instruction.
- 1.2. The Study 1200 learning system includes all the features and functions that are essential for effective and enjoyable teaching and learning, such as pre-set language learning activities, screen transfer features, audio and text communication tools, web browsing and program launch capabilities, file functions and classroom management and control features.
- 1.3. The Study 1200 learning system includes an institution wide site license for Study 500 classroom management software.
- 1.4. Study 1200 will operate on Windows®-based PCs and over a local area network – no additional software or hardware (other than quality headsets) will be required.
- 1.5. The system can be extended with additional extension modules in the future.

1.5.1. Study Examination Module

The Examination Module is a valuable teaching tool that simplifies the creation and administering of tests.

The Examination Module includes a 6-step “wizard” application that assists and guides teachers in the creation of tests. The flexibility of the Examination Module allows teachers to easily vary the types of test questions and to edit any existing tests.

The Examination Wizard allows instructors to design any type of questions to test a particular skill or student ability. Teachers may even set the time and outline instructions for tests before administering them, as well as preview entire exams.

The Examination Module provides important follow-up by generating results from a test for both student and teacher, allowing students to receive immediate feedback on their performance. The teacher may also choose not to show the students their results immediately.

Students answer tests easily and conveniently using Sanako Exam Player and teachers use the regular activity selection procedure in the Study 1200 to launch exam files for students. Students may also use the Exam Player in stand-alone mode for additional exam practice or review.

1.5.2. Study Video Live module

The Sanako Video Live Module enables teachers to stream video directly to students from a variety of analog sources, including DVD and VHS players, or from media files.

The module consists of a Sanako video streaming hardware server with Sanako software, and a simple browser interface for administration and video stream management. The Sanako Video Streaming Module is ready to be used once the video streamer is installed on the LAN, and one or more video sources are connected to the video streamer.

The module allows teachers to display video to students, or to simultaneously send the video material, digitize it and then save the video content as a media file for future use. The teacher can launch a video stream to student screens with a simple click of a Video Stream button in the Sanako Study interface, or by selecting it as a media source in language learning activities.

2. EASY INSTALLATION AND MAINTENANCE

- 2.1. The system will be a pure software solution that does not require any additional hardware.
- 2.2. Product support, updates, service patches and bug fixes will be available online.
- 2.3. A software maintenance contract will guarantee free upgrades for the duration of the agreement.

Features

3. MONITORING STUDENTS

Thumbnails

- 3.1. Tutors will be able to select whether the classroom layout displays student icons or thumbnail images of student screens.
- 3.2. Tutors can at any time view a thumbnail of a selected student screen.
- 3.3. Student thumbnails can be viewed in a separate window
- 3.4. Thumbnail size is adjustable on a sliding scale

Monitoring student screens

- 3.5. Tutors will be able to monitor the screen activity and audio of a selected student in real time.
- 3.6. Tutors will be able to either change the monitored student manually or go through the students automatically and consecutively.
- 3.7. When monitoring several students, teachers can define the time that a single student screen is displayed and fit the monitored student screen automatically into the monitoring window.

4. FOCUSED WEB BROWSING

- 4.1. Tutors can launch and close Web browsers for the students and take full control of the Web browsing at any time by having the student browsers follow the tutor's navigation.
- 4.2. Tutor can send websites to student browsers without limiting student control to web browser
- 4.3. Tutors can also create lists of allowed and denied Web sites.
- 4.4. Possibility to block pop-up windows and to hide the toolbar on student browsers.
- 4.5. Tutor can disable the Internet if wanted
- 4.6. Possibility to prevent students from opening other browsers during Study web activities

5. SCREEN SHARING WITH AUDIO

Teacher screen to students

- 5.1. The tutor screen can be displayed to a selected student, a session, or to all students while the tutor is also able to talk to them.
- 5.2. If needed, the students will not be able to use their keyboard or mouse to interfere.
- 5.3. Tutor can use a marker tool to highlight objects on screen.

Student screen to students

- 5.4. A selected student's screen can be displayed to the other students in a session or to all students and the model student can also talk to the others.
- 5.5. The other students will not be able to use their keyboard or mouse to interfere.

6. REMOTE CONTROL

Tutors will have two options for remotely accessing student workstations:

- 6.1. Collaborate – Tutor will see the student screen and share mouse and keyboard control simultaneously with the student.
- 6.2. Remote Control – Tutor will see the student screen and have full mouse and keyboard control. The student's mouse and keyboard are locked.

7. LOCKING STUDENT COMPUTERS

- 7.1. The tutor can lock the student screens, controls, or the student computers entirely in order to draw students' attention to a given task.
- 7.2. Any applications and files can be opened onto a locked student computer.

8. SHUTDOWN FUNCTIONS

- 8.1. The tutor is able to remotely
 - shut down
 - restart
 - log offany combination of student computers.

9. PC POWER FUNCTION

- 9.1. The tutor can switch students PC power on by using PC control (Wake-on-LAN)

10. PLAYLISTS

- 10.1. All functions for assigning student playlists and managing learning material are available in a single window.
- 10.2. The system has separate playlists for different sessions and a tutor file area for teaching materials.
- 10.3. The students will be able to access a personal file area, as well as their session playlist.
- 10.4. The tutor will be able to:
 - add and remove files to/from selected session playlists and the tutor file area
 - copy files to and from selected session playlists
 - launch and close files for selected sessions
 - preview files before launching or copying them to students
 - copy and launch files for selected sessions. Files copied on students PCs can also be closed and removed by Tutor

Homework

- 10.5. The Homework feature allows teachers to distribute material to students for independent work by adding them to a Homework file area in the Student Player
- 10.6. Students have free access to files in the Homework file area and can save them onto a network folder or onto a memory stick
- 10.7. The system has an automatic procedure for collecting homework files. Teacher can open a window on student computers where students can drag and drop their files. The files are automatically collected to a pre-set folder where teacher sees the progress of file collection in real-time.

11. PROGRAM LAUNCH

- 11.1. The tutor will be able to launch and close any applications for students, as well as create shortcuts to programs that are frequently used.
- 11.2. Programs can be launched even when student PC is locked. The program will launch on top of the locked screen.
- 11.3. The tutor will be able to add parameters to the launched program. This allows the tutor to start the programs in some desired mode for the Students. Parameters can also be saved to program shortcuts.

12. WHITE BOARD

- 12.1. Tutor can use the white board and transfer it to student screen
- 12.2. Tutor can insert any picture to the white board
- 12.3. Tutor can write text and use drawing tools with the white board
- 12.4. Tutor can save the white board for later use

13. VOTING

- 13.1. Teachers can create and send out multiple-choice questions during a lesson
- 13.2. Teachers have a separate window for test creation where questions and answers can be entered manually with up to ten answer alternatives
- 13.3. Teachers can indicate correct answer to students after they have selected their answer
- 13.4. While the students answer, a figure displaying the percentages of student responses is displayed and updated on the teacher screen in real time

14. LIVE FEEDBACK

- 14.1. Students are able to express the degree to which they are following instruction and if they need further explanation of the topic at hand
- 14.2. Teacher enables feedback with Live Feedback button, which activates three feedback icons on the student screen corresponding with three states (Following, Confused, Lost)
- 14.3. A real-time graph and percentages of student states is displayed on the teacher screen and states of individual students are indicated on the classroom view

15. INTEGRATION WITH MICROSOFT™ OFFICE ONENOTE

- 15.1. With OneNote, the tutor can share classroom notes to students with a single mouse click
- 15.2. Sanako Study is compatible with Microsoft™ Office OneNote 2007

16. COMMUNICATION

Audio communication

- 16.1. The tutor will be able to talk to the entire class or session, as well as discuss with a selected student.
- 16.2. Students will be able to talk with other students in their session and call the teacher when they need assistance.
- 16.3. Students that want to talk with the teacher are indicated on the classroom view.

Messages

- 16.4. The tutor can send messages to a single student, to a session or to all students and the students can send messages to the teacher.
- 16.5. Tutor can select whether the messages will be closed by students, by the teacher, or automatically after a set period of time.

Chat

- 16.6. The system will include a text chat feature that can be used by both teachers and students. The chat feature will include separate chat rooms for all sessions.
- 16.7. Tutors will be able to view the chat history of a single room or monitor all the chat rooms simultaneously.
- 16.8. The tutor can enable and disable the chat function for the students.
- 16.9. The chat histories can be saved, printed, or cleared.

17. SEATING PLANS

- 17.1. The seating plan and student icon layout can be edited easily.
- 17.2. The classroom layout can be saved as the default classroom.
- 17.3. The student icons will be color-coded according to the sessions they are in.
- 17.4. The student names and numbers can be edited freely.

18. SESSIONS

- 18.1. The students can be divided into six different sessions.
- 18.2. The sessions can be controlled separately and can simultaneously perform different activities.

19. ACTIVITIES

- 19.1. It is possible to collect student recordings at any point of activity and it is suggested after ending certain activities.
- 19.2. The system will have pre-set learning activities that can be used in the basic teaching of any subject.
- 19.3. The tutor will be able to start, pause, and end the activities and will remain in full control throughout.
- 19.4. The system will include the following activities:
 - **Self-Access** – Students will be able to use their workstations and the Study 500 Student application. Although the students are engaged in individual studies, teachers can still communicate with and control the students whenever needed.
 - **Tutoring** – The screen and voice of the tutor or a selected student will be transferred to the others in the session. This allows the tutor or a student to instruct the others using any applications on their computer.
 - **Web Browsing** – Internet Explorer browsers are launched on student workstations allowing them to browse the Internet. Tutors will be able to define allowed or denied web sites, as well as make the student browsers follow the teacher's browser preventing the students from browsing independently.
 - **Listening Comprehension** – Students listen to the selected media source and teachers can, for example, give them different exercises relating to the audio material and select students to answer questions. The teacher can also let the students work with the source material independently and at their own pace or lock their player controls.
 - **Discussion** – Students practice conversational skills and learn to express ideas and opinions in groups whose size can be set from two to all students. You can create the groups manually or let the Study 1200 program form the groups, either according to student numbers or randomly. The teacher can at any point listen to or take part in student conversations. Group members are shown in the classroom view.
 - **Model Imitation** – Students listen to and repeat after a model track to practice the stress rhythm and intonation of a foreign language, while their voices are recorded onto the student track. You can either use sources with ready-made pauses in them or manually pause the audio source during the activity.
 - **Reading Practice** – Students read a text which is recorded onto the student track, and can then go over their work independently to improve their proficiency. Reading aloud is a useful way of practicing intonation, rhythm and pronunciation and is ideal for students' individual practice. Before starting the activity for the student, teacher can browse for a text document which will be displayed for the students' right after the teacher starts the activity.
 - **Round table discussion** – Round table discussion allows teachers to set up small student groups with a designated chairman, who leads the discussion and assigns turns during the discussion by passing a microphone around the group. The activity allows teachers to set up a meeting environment to help advanced language learners strengthen their oral presentation skills. Chairmen and participants for the groups can be defined either manually or with automatic options. Student applications display a list of discussion participants and chairman and students can request the microphone by clicking a request button. Teacher can listen in on each group and participate in the discussion when needed.
 - **Vocabulary Test** activity allows teachers to easily conduct word quiz -type language learning tests. The teacher can either enter the quiz words manually or by importing a ready word list and students will then need to simply fill in their answers in a dialog that is launched on their screens. The activity allows teachers to create, launch and save tests, as well as collect results.
 - **AP Exam** – The AP® Exam is an exam type that is used in the high school level by the Advanced Placement Program in the United States. With Study 1200 you can also accomplish externally-certified AP® oral exams and the Study 1200 student application provides a quick, easy and efficient exam vehicle. Note: Only available in US Market.

- **TEM 4** – TEM is short for Test for English Majors and it is a standardized English test used in China to test students' college-level proficiency in English. The activity consists of specified sections: Listening to and then retelling a story, giving an impromptu speech on the basis of written material and a reading of dialogue. All the sections are recorded to a single media file.
- **TEM 8** – TEM is short for Test for English Majors and it is a standardized English test used in China to test students' college-level proficiency in English. The activity consists of specified sections: English to Chinese interpretation, Chinese to English interpretation and an oral presentation on a given topic. All the sections are recorded to a single media file.

20. MEDIA SOURCES

The Media source for an activity can be one of the following:

- 20.1. **Tutor** – Tutor speaks to a microphone and the audio will be delivered to the students participating in the session
- 20.2. **Student** – Tutor can select a student whose audio will be delivered to the students participating in the same session
- 20.3. **Audio CD** – Tutor can use the CD drive in teacher's PC to play CD audio for the students participating in the session.
- 20.4. **File** – Tutor can use media files from the school's file system or from a local drive to deliver an audio file to the students participating in the session. Video files can be played locally on student PCs.
- 20.5. **External Source** – Tutor can use an external source connected to line in socket in the Teacher's PC to play audio for the students participating in the session. External source can be e.g. MP3 player, CD player, Cassette player, etc.
- 20.6. **Tutor Player** – Tutor can play files using the Tutor Player. The audio file played on Tutor Player will be delivered to the students participating in the session. Tutor player can be set in Tutor preferences; it can be e.g. Study Tutor Player, VLC Media Player, Windows Media Player. etc.
- 20.7. **Video Stream** – Tutor can stream video to the students participating in the session (Video Live Module required)

21. TEACHER PLAYER

- 21.1. The media player will be compatible with material created with Sanako Media Assistant.
- 21.2. The media player will have all the essential player functions, play, stop, pause, recap, and repeat, as well as an unlimited number of bookmarks.
- 21.3. Playback of media files in commonly used formats, such as WAV, AVI and MP3, as well as in Sanako's own file formats MFF and MAA.
- 21.4. Possibility to isolate a segment of the media file to be played separately.
- 21.5. Basic recording functionality and Voice Insert functionality for model imitation purposes.
- 21.6. Analog media sources, such as audio and video cassettes, are automatically digitized into media files when they are transferred to students. The Study 1200 Player also has a separate function for digitizing analog material. Digitizing allows institutions to build up a digital library of learning material, saving both time and space when searching for and storing lesson content.
- 21.7. In Audio Graph mode, the Study 1200 Player displays visual representations of both the program and student tracks. The audio graphs allow students to view and compare their recorded output with the program source. This is especially useful during pronunciation exercises.

22. STUDENT PLAYERS

- 22.1. The student applications will include a media player that can be used to playback media files in commonly used formats, such as WAV, AVI and MP3, as well as in Sanako's own file formats MFF and MAA.
- 22.2. The tutor application and all student players connected to the tutor include a licensed MP3 codec in order to save MP3 encoded audio files. Sanako can be found on the list of licensed companies at <http://www.mp3licensing.com/licensees/index.asp>
- 22.3. The media player will be compatible with material that is created with Sanako Media Assistant.

- 22.4. The media player will have all the essential player functions, play, stop, pause recap, and repeat, as well as up to 99 bookmarks.
- 22.5. Students will be able to isolate a segment of the media file to be played separately.
- 22.6. Basic recording functionality and Voice Insert functionality for model imitation purposes
- 22.7. Analog media sources, such as audio and video cassettes, are automatically digitized into media files when they are transferred to students. The Study 1200 Player also has a separate function for digitizing analog material. Digitizing allows institutions to build up a digital library of learning material, saving both time and space when searching for and storing lesson content.
- 22.8. In Audio Graph mode, the Study 1200 Player displays visual representations of both the program and student tracks. The audio graphs allow students to view and compare their recorded output with the program source. This is especially useful during pronunciation exercises.

Advanced player settings

- 22.9. The media player will allow users to define the default audio levels for the student player.
- 22.10. The current audio levels can be saved as a registry file and the registry file can be copied to equalize the audio levels on all computers.

Study Lite site license

- 22.11. Sanako Study 1200 includes an institution wide Site License for Study Lite player which meets the student player specifications in this document. This means that Study Lite may be installed anywhere within an institution and to computers of people associated with the institution, including students' private computers, for self-study.
- 22.12. The Study Lite player may also be connected to a Study 1200 classroom when the computer running Study Lite is connected to the same network as the Tutor application. Connecting Study Lite to a classroom reserves one user from the school's license.

23. AUTHORING FEATURES

Subtitling

- 23.1. Teachers and students are able to type a transcript of or to attach images to audio material, to create subtitles for videos, or to annotate the content of a program file.
- 23.2. Both text and images can be synchronized with the same media file.
- 23.3. Subtitle texts can be imported from a text file. When importing, characters that are used to indicate a new subtitle can be set in options
- 23.4. Start time and duration of subtitles can be freely edited
- 23.5. Subtitling feature includes a selection for font and font size for subtitles

Instructions

- 23.6. Free-form instruction texts can be added and saved into media files
- 23.7. Instruction text will always be displayed when the file is opened

Exercise window

- 23.8. An exercise window can be displayed during playback of a multimedia file.
- 23.9. Exercise window has HTML code support which enables interactive functionalities such as gap filling, multiple choice fields and use of images.
- 23.10. The exercise window can be saved into a single multimedia file.

24. AUDIO RIPPING TOOL

- 24.1. Audio ripping allows users to rip audio from a CD, the Internet, or from an external source.
- 24.2. Digitized audio is saved into and is readily available in the Study playlist as media files.
- 24.3. Users may select the file format for ripped audio material and whether to rip as a single file or as separate files for each track

25. EASE OF USE

- 25.1. The tutor interface will feature everyday classroom terminology and will cater to differing levels of IT literacy.
- 25.2. The system will include a browsable help file that guides tutors in the use of the system.
- 25.3. The tutor and student applications will have an automatic function for testing whether the computer's audio hardware is compatible.

26. MULTIPLE SYSTEMS WITHIN A NETWORK

- 26.1. The software will include the ability to set up multiple systems within a single network without interference.
- 26.2. The system allows for the installation of independent classrooms with a separate server computer for each, or using a shared server computer for multiple classrooms

27. WI-FI COMPATIBILITY

- 27.1. The software is compatible with new generation 802.11 n wireless networks without loss of performance*

*Sanako guarantees a satisfactory Wi-Fi user experience when certain Wi-Fi hardware criteria have been met. The hardware criteria for wireless implementation are defined in separate wireless documentation

28. SOUND DEVICE CONFIGURATION TOOL

- 28.1. Integrated Sound Device Wizard application for configuring audio devices.
- 28.2. Audio device assignments can be edited in order to match Study audio functions with correct audio devices.
- 28.3. Preset optimized audio settings may be employed for Sanako SLH07 headsets

29. LICENSING

- 29.1. Customers will receive license activation tokens. The license activation tokens are used during installation to complete an online license activation process.
- 29.2. During or before installation customers need to register and create a user account on the Sanako registration portal. Once the registration process has been completed, customers will receive their user account information by email.
- 29.3. An alternative offline license activation process may be employed in environments where server computer does not have an Internet connection
- 29.4. The software may be used for two weeks without an active license

30. TRAINING MATERIAL

- 30.1. Direct link in teacher application to video tutorials that cover common usage scenarios

31. INSTALLATION REQUIREMENTS

Minimum requirements for Teacher and Student PC

As per the requirements for the Microsoft® Windows® XP, Windows Vista or Windows 7 operating system

- Microsoft® Windows® XP, Windows Vista or Windows 7 operating system
- Microsoft .NET Framework® 2.0 SP2, Microsoft .NET Framework 3.0 SP2 or Microsoft .NET Framework 3.5 SP1
- DirectX 9.0c or higher
- 1.5 GHz processor
- 1 GB of system memory, 2 GB recommended for Tutor PC
- 100 MB of free disk space for installation *
- 1024*768 display resolution with 16-bit colors
- AC97 or HDA compatible sound card
- Network Adapter, TCP/IP support required

- PC Headset – recommended Sanako models to ensure high quality audio
- QuickTime® 7.0.3 or later is required for displaying certain file types and for the Sanako Study Video Live Module
- Internet access during Server component installation**

*) The amount of free disk space required during the use of Study 1200 varies primarily according to the use of the recording functionality - longer recording times require more disk space.

**) If there is no Internet connection on the Server computer, you may perform an offline activation process. Instructions for offline activation can be found later in this guide.

Note: Sanako Study only supports Microsoft OneNote 2007. In order to use the OneNote feature, Microsoft OneNote must be installed on the student computers before installing Study Student. Otherwise Study will be unable to connect to OneNote and tutor notes cannot be sent to students' OneNote applications.

Note: Actual requirements may vary based on your system configuration. It is essential to make sure that the operating system runs smoothly on each computer where a Study Tutor or Student application will be installed.

Network Requirements

The following requirements should be met by the network.

- Multicast must be enabled in the network.
- All computers must be in the same TCP/IP sub-net in order to allow multicast transfer of screen and audio to students
- It is recommended that all workstations within a room are connected to the same network switch with support for multicast transmission
- Student and teacher workstations need to be able to PING each other and the Study Server with TCP/IP packets
- If the computers have multiple network adapters, the adapter used by Sanako Study must be bound first, because Windows operating systems send multicast data to the first adapter
- In LAN minimum of 100Mbps speed or greater dedicated to each workstation. For Wi-Fi implementations, please refer to the Sanako Wi-Fi Deployment Guide found on the installation DVD for requirements and suitable wireless hardware
- For optimum performance in file operations, we recommend using a file server for storing media files and collected student recordings. However, the teacher computer may be used for file operations if a separate file server is not available.
 - Teacher and students should have unrestricted access to the server
 - Schools may use an existing server with Linux, Windows NT or Windows Server operating system
 - A NAS (Network Attached Storage) server may also be used

Firewall settings

Sanako Study adds required Windows firewall exceptions automatically during installation.

If a non-Windows firewall is used please verify that the following programs have been added to the firewall exceptions list.

- Tutor.exe (Tutor computer)
- Student.exe (Student computers)
- StudyServer.exe (on computer with Study Server software)

The default TCP ports used by Sanako are:

- Port 5060 for audio packets
- Port 15525 for screen packets
- Port 15535 for remote control data
- Ports 6310, 6311 and 6312 for Study Server operations



SAFEGUARD YOUR IT ENVIRONMENT

SANAKO Study 20 defends your computer hard disk against accidental or willful changes and computer viruses, freeing administrators from trouble-shooting and allowing them more time to manage the computer environment.

Flexibility and simplicity of operation

The operating principle is very simple, using free memory space to temporarily save changes to the hard disk, thus maintaining its original state. Sanako Study 20 also gives the administrator more flexibility, by including an option to remotely enable and disable protection functions on one or more workstations in the network.

Create a secure and productive environment

Sanako Study 20 facilitates the work of the system administrator and teaching staff by ensuring that the same system and desktop settings are available each time they begin their work.

At the same time, students are free to use whatever commands and programs they want, without making any permanent changes to the system. Sanako Study 20 has been developed in close cooperation with educators, institution heads and other advisory bodies.

Automatic and independent protection for your hard disk

Once installed and activated, Study 20 searches independently for free memory space on the hard disk, and selects an optimal area, which is then used to store information temporarily. When attempts are made to write information to the hard disk, Study 20 diverts access to this temporary storage area, thus protecting the hard disk from any changes, whether they are unintentional or deliberate, or caused by viruses. Access to other storage areas does not affect the functioning of Study 20.



SANAKO Study 20 Functionalities

Full system availability while protecting your open-access computer environment

With the protection offered by Sanako Study 20 it allows administrators to confidently give all users full access to the benefits of the computer environment without worrying about potential abuses or exposing the system configuration to risk. This means a productive and relaxed working environment. Users are free to save working documents, change and delete files, and even add programs without affecting the hard drive.

Options for recalling default settings

Sanako Study 20 offers the system administrator and users automatic and manual options for restoring default settings saved on the hard disk. The default settings become automatically available again after startup of the computer, whether or not there had been previous modifications to the system data, or even if the hard drive had been formatted. A manual command is also available for the administrator or user to restore the default settings. Manual recall of the original settings offers great possibilities for software testing and evaluation, allowing users to change settings to review new software and to revert to the original status once testing has been completed.



SANAKO Study 20 guarantees tamper-proof protection, while offering users all the advantages of the ICT environment.

With SANAKO Study 20 you can:

- Automatically restore the default setting after rebooting. The original settings become available after rebooting, even if system data have been deleted or drivers have been changed.
- Manually restore the default setting with a command from either the administrator or the user. This means that changes made to the system can be reversed after days or even weeks.
- Remotely activate and de-activate Study 20 protective functions. A user-friendly admin console also allows Study 20 to be controlled in large networks.

Effortless installation

Installing Sanako Study 20 does not require any special expertise, and the system is easily set up and configured. Study 20 is activated automatically after installation, allowing administrators to set up the required operating modes and options. Once the protection facility has been activated, it can be disabled by entering a password.

System requirements

- Study 20 will run on any PC with Microsoft® Windows® later than 95 using FAT or NTFS.
 - The installation requires at least 70 MB free space on drive C and at least 32 MB RAM on Windows® NT/2000/XP.
- Study 20 cannot be installed with compressed system hard drives.

Microsoft and Windows are either registered trademarks or trademarks of Microsoft Corporation in the United States and/or other countries.